

the *Meath*  
epilepsy charity



Remembering  
us in your will



“ I have so much in my life that I want to do. Before I lived at The Meath, it didn't seem likely that I would get the chance. But with the help and opportunities that I have now, I have even taken up sports. It's wonderful! I have always said to myself, don't let your disability stop you doing things – take a chance in life and have a go... and now, I feel I can! ”

*Regan, Meath resident*



## With your help, we can continue to make a difference

*Mark Dumas, Trustee, explains the importance of legacies to the work of the Charity:*

“It may surprise you to know that, each day, eighty five more people are diagnosed with epilepsy across the country. Many people's epilepsy will be so severe that medication alone will not control it, some even requiring twenty-four hour care in order for them to live safe, happy and fulfilled lives.

Our services at The Meath are making a tremendous difference day to day for the people living with severe epilepsy and associated learning and physical disabilities we currently support. But it would be wonderful if we could safeguard our service network for the generations to come.

You can help us to do this and it's a simple process. A gift to the Meath in your will, once family and friends have been taken into account, will impact dramatically on what can be achieved by the charity, as well as provide a wonderfully long-lasting personal legacy.”

*Mark Dumas, Trustee*



# The Meath is a very special place

Every visitor to The Meath cannot help but notice the positive and uplifting atmosphere that greets them on arrival and that an enabling 'can do' ethos prevails throughout the organisation. We are immensely proud to offer the people in our care such a broad range of services which, together with our dedicated staff and volunteers, enable the people we support to live as independently as possible and to live fulfilled lives.

Statutory funding does not cover the full cost of the care and support we believe the people we support need and deserve. We work hard to maintain our vital services through fundraised income. Without voluntary income, we would not be able to sustain our vital Health Care services which include Physiotherapy, Occupational and Sensory Therapy. The full cost of delivering the broad range of exciting activities on offer within our Skills Centre and Social Enterprise would also not be met. Life without these services would be very different.

By accessing Physiotherapy, the people we support can minimise pain and maximise mobility. Occupational Therapy enables the people we support to build self-confidence with life skills and to pursue their own individual goals in life. The daily activities on offer within our dedicated skills centre quite simply give each and every person we support a sense of purpose, pride and achievement.

Your help in the form of a gift in your will would help us to ensure that we can continue to deliver the very best services for the people we support in years to come. *Thank you.*



“ Nicola flourishes in this brilliant, loving environment where her every need is met. Each time I visit I am overjoyed by the friendliness of the staff and residents, the healthy food, the cleanliness, Nicola's beautiful room which overlooks the garden, her cupboard and drawers full of clean clothes. My sister is very lucky to be at this wonderful home. Her hair is styled, her fingernails painted. She is happy, and, despite now being wheelchair bound, the staff continue to hoist and care for her and fill her days with meaningful activities. ”

*Judy, sister.*



## I'm leaving a legacy

“ As a patron and friend to The Meath, I have witnessed the transformation of the services on offer and all that has been achieved during that time by the people who are supported by The Meath. I am proud that the charity is continuously at the forefront of positive change, and will be so in the future, with your help.

So if, like me, you care passionately about The Meath, then please do join me in leaving a gift to the charity in your will. What a fantastic way for us to help some very special people to experience all that life can offer- just as I and my family have been able to do. ”

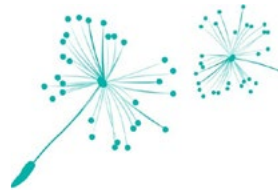
*Dr Colin Stokes MBE*



## What your gift could fund

As an example, your Legacy could support:

- **£500** pays for a farm visit
- **£2,500** pays for an air conditioning unit
- **£5,000** pays for art supplies for a year for the Skills Centre
- **£10,000** pays for the annual cost of trips and visits for the people we support
- **£25,000** pays for a member of staff in the Life Enrichment Programme for a year
- **£50,000** pays for 1,282 sessions in Changing Perceptions/Skills Centre/Wellbeing Team
- **£100,000** pays for our Nursing Team
- **£250,000** pays for the Skills Centre for one year



**The Meath Epilepsy Charity** Westbrook Road, Godalming, GU7 2QH  
Tel: 01483 415095 Web: [www.meath.org.uk](http://www.meath.org.uk)  
Registered Charity Number: 200359

the *Meath*  
epilepsy charity